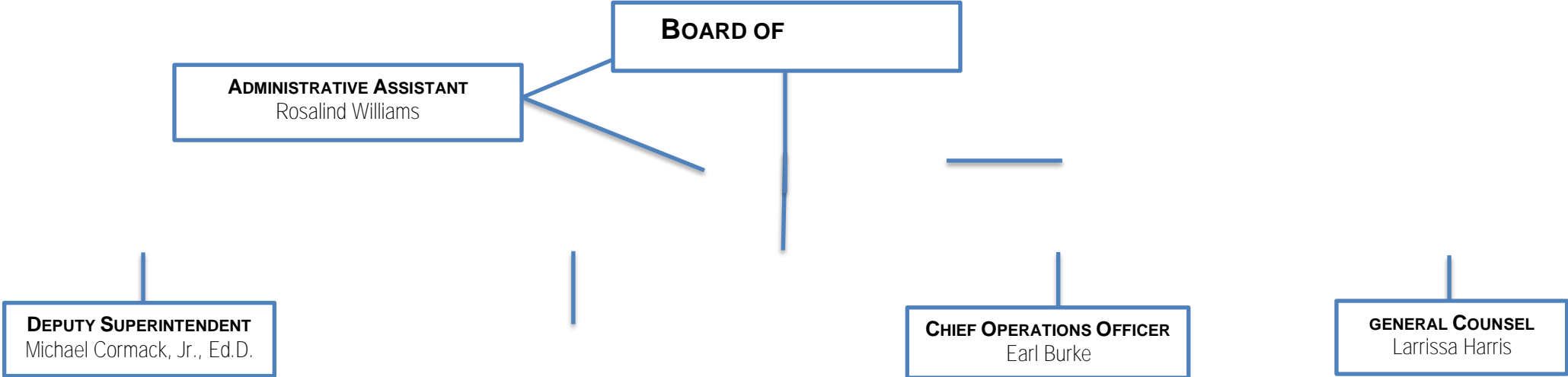
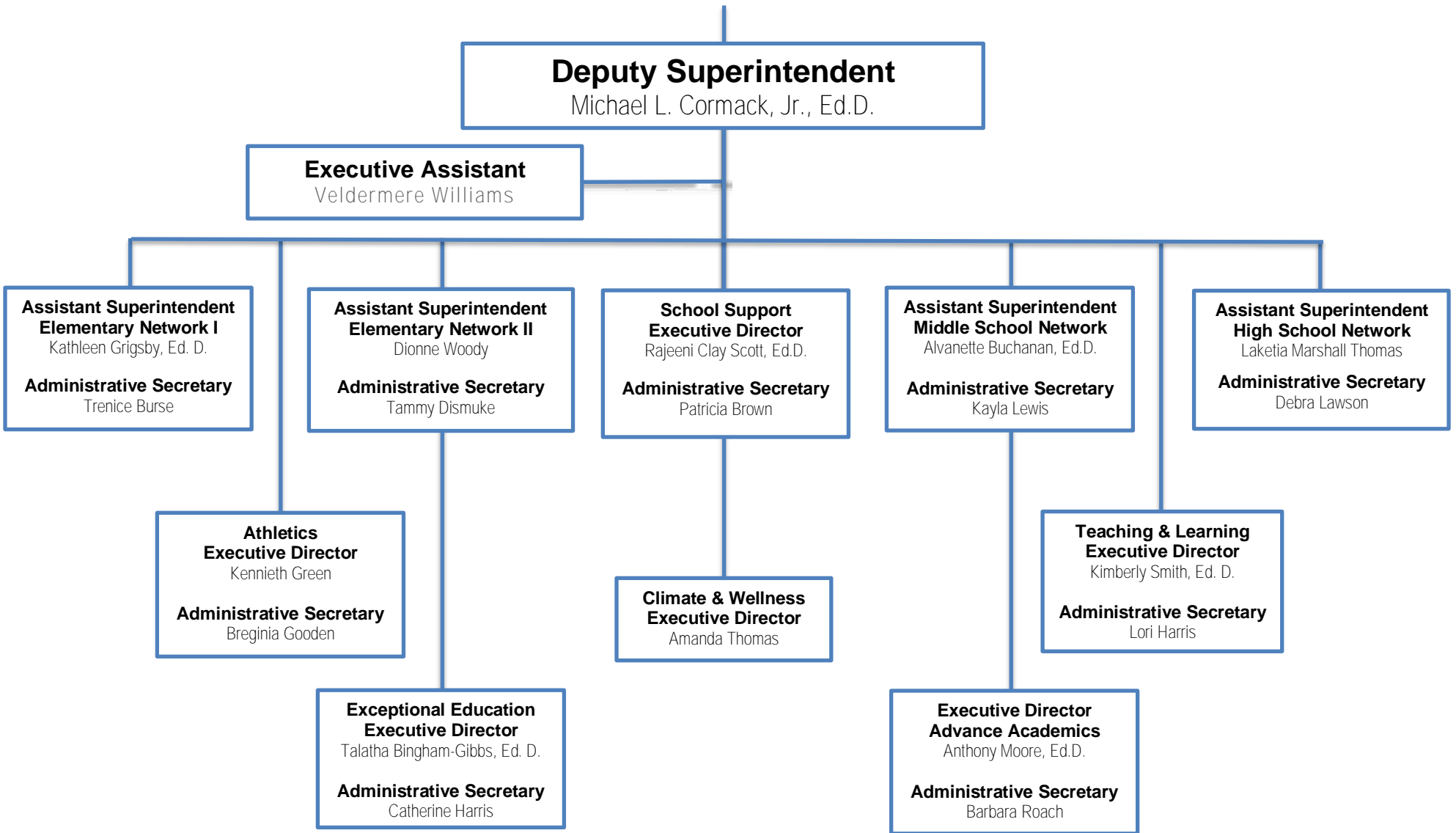


# JACKSON PUBLIC SCHOOLS REORGANIZATIONAL CHART 2024-2025



# DEPUTY SUPERINTENDENT



# ASSISTANT SUPERINTENDENT

## Assistant Superintendent Elementary Network I

Kathleen Grigsby, Ed. D.

### Administrative Secretary

Trenice Burse

### District Instructional Coach

Barbara Griffith-Edwards, Instructional Coach, ELA  
Dr. Kierra Garner, Instructional Coach, Math  
Dr. Dominique McInnis, Instructional Coach,

#### Barack H. Obama Elementary School

Stephanie Wilson, Principal

#### Bates Elementary School

Dr. Rachel Ellis-Coleman, Principal  
Dr. Josie Blake, Assistant Principal

#### Boyd Elementary School

Joseph Collins, Principal  
Dr. Quietasha Younger, Assistant Principal

#### Casey Elementary School

Vanessa Hinton-Dean, Principal

#### Galloway Elementary School

Dr. Linda Murray, Principal  
Kristen Powell, Assistant Principal

#### Johnson Elementary School

Guynesha Johnson, Principal  
Stephanie Lockett, Assistant Principal  
Anna Alderman, Assistant Principal

#### McWillie Elementary School

Dr. Sara Harper, Principal  
Jennifer Jyles, Assistant Principal

#### North Jackson Elementary School

Jocelyn Smith, Principal  
Ursula Watson, Assistant Principal

#### Oak Forest Elementary School

Camesha Hatchett, Principal  
Millicent Steverson, Assistant Principal

#### Spann Elementary School

Lori Torrey, Principal  
Machaela Barnes, Assistant Principal

#### Walton Elementary School

LaRoy Merrick, Principal  
Denise Thaggard, Assistant Principal  
Jarett Benson, Assistant Principal

#### Wells (Power)

Dr. Kescher Love Rankin, Principal

# ASSISTANT SUPERINTENDENT

## Assistant Superintendent Elementary Network II

Dionne Woody

### Administrative Secretary

Tammye Dismuke

### District Instructional Coach

April Benjamin, Instruction Coach, ELA  
Katrina Jones, Instructional Coach, ELA  
Benardytte Robinson-Stokes, Instructional Coach, Math  
Jamie Profice, Instructional Coach, Science

### Clausell Elementary School

Carla Baker Thomas, Principal

### Green Elementary School

Dr. Jamaka Holman, Principal

### Isable Elementary School

Catrina Crawford, Principal

### John Hopkins Elementary School

Yasantas Burton, Principal  
Dr. Nicol Sanders-Hemphill, Assistant Principal

### Key Elementary School

Elana Tate, Principal

### McLeod Elementary School

Dr. Cynthia Veals, Principal  
Dr. Renalda Singleton, Assistant Principal

### Pecan Park Elementary School

Dina Owens, Principal  
Triana Davis, Assistant Principal  
Melinda Wilcher, Assistant Principal

### Timberlawn Elementary School

Dr. Lynn Horton, Principal

### Van Winkle Elementary School

Ashanti Barnes, Principal

### Shirley Elementary School

Kimberly Hulitt-Griggs, Principal  
Varranda Love, Assistant Principal  
Catreda Morgan, Assistant Principal

### Wilkins Elementary School

Cheryl Brown, Principal  
DeBorah Smith, Assistant Principal



# ASSISTANT SUPERINTENDENT

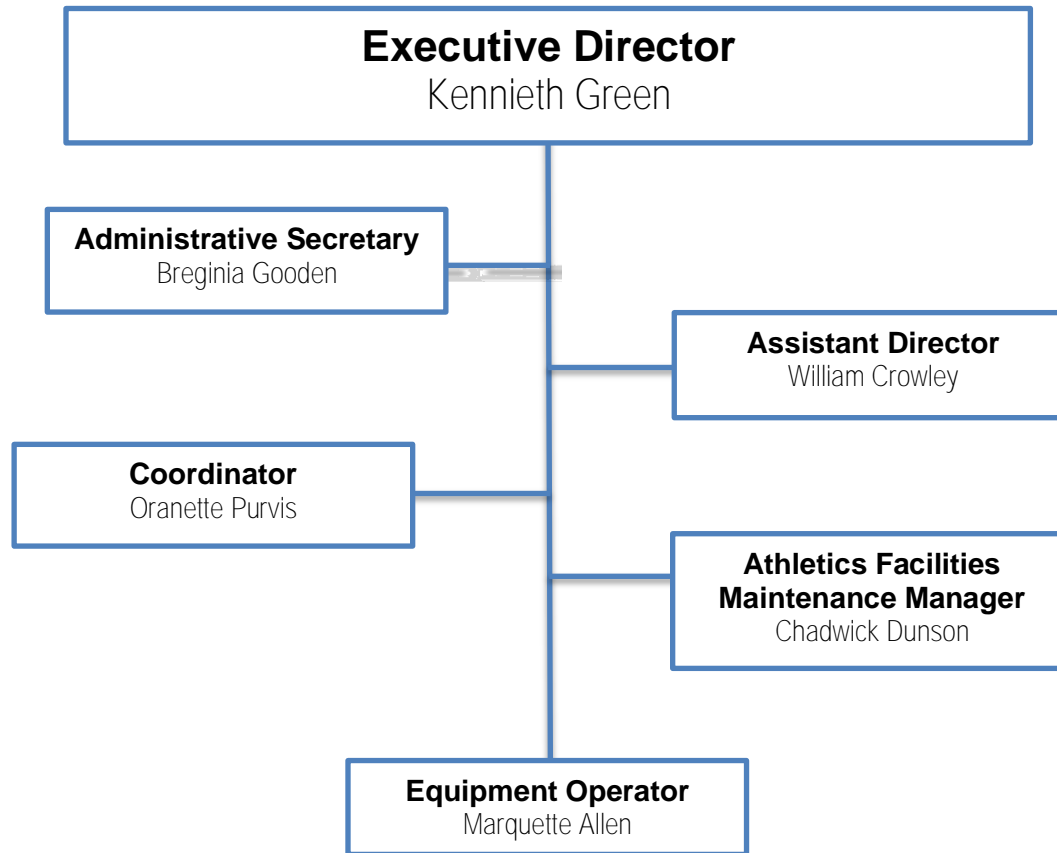
**Assistant Superintendent  
High School Network**  
Laketia Marshall-Thomas

**Administrative Secretary**  
Debra Lawson

**Callaway High School**  
Dr. Shemeka McClung, Principal  
Kelly Matin, Assistant Principal  
Dr. Crystal Hill, Assistant Principal  
Vacancy, Assistant Principal



# ATHLETICS

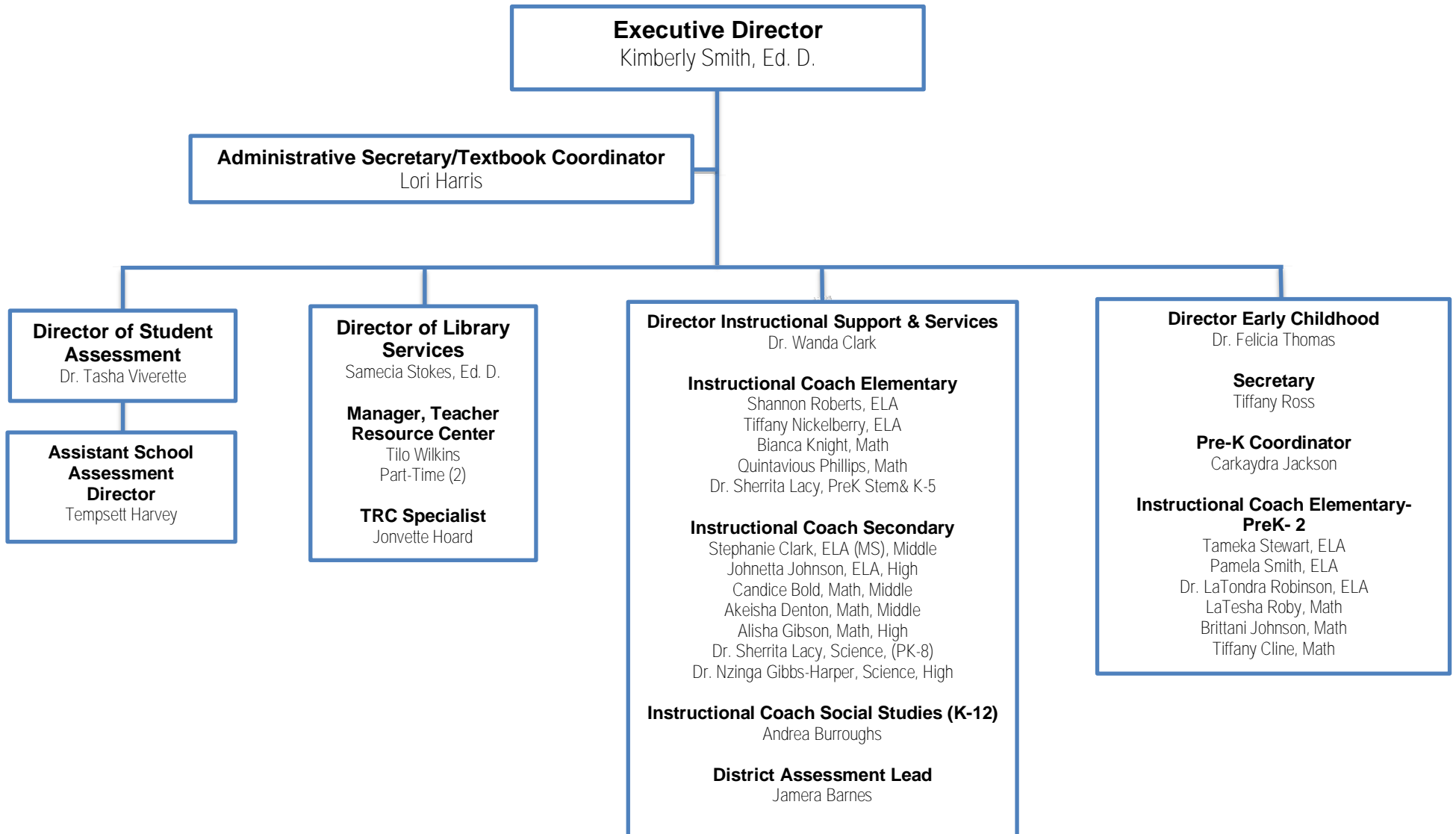








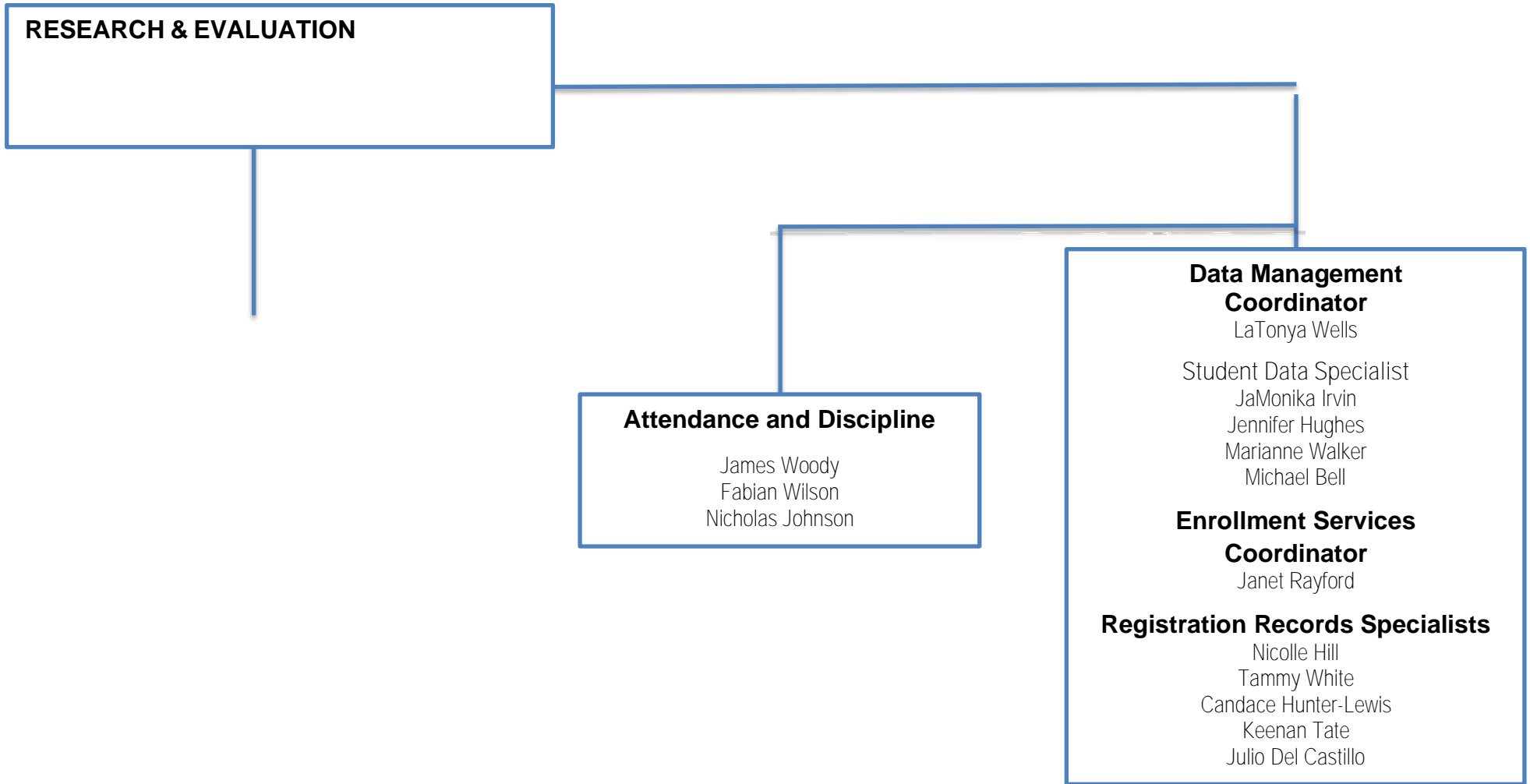
# TEACHING AND LEARNING



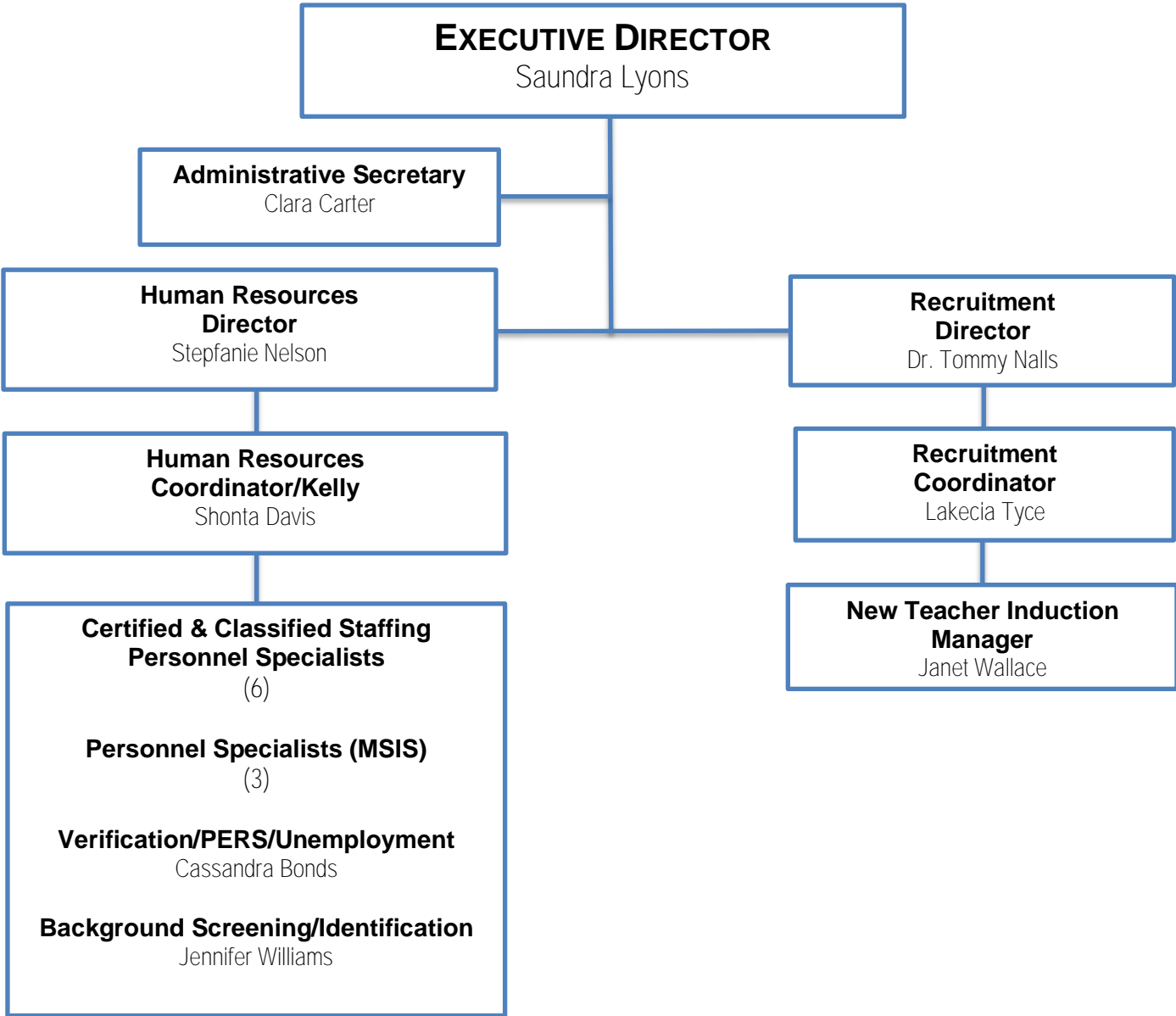




# RESEARCH ENROLLMENT ACCOUNTABILITY



# HUMAN RESOURCES



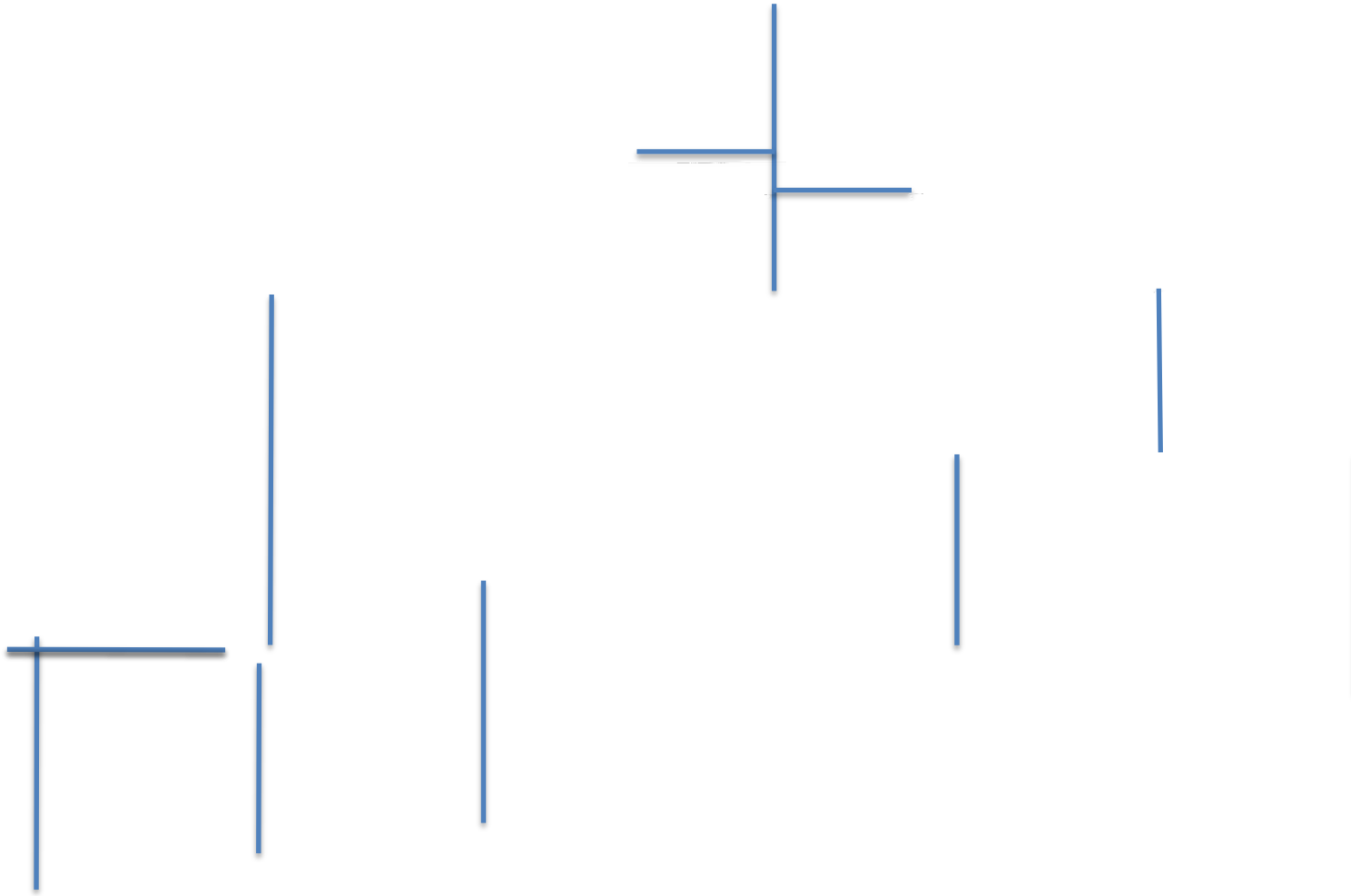








# CAMPUS ENFORCEMENT



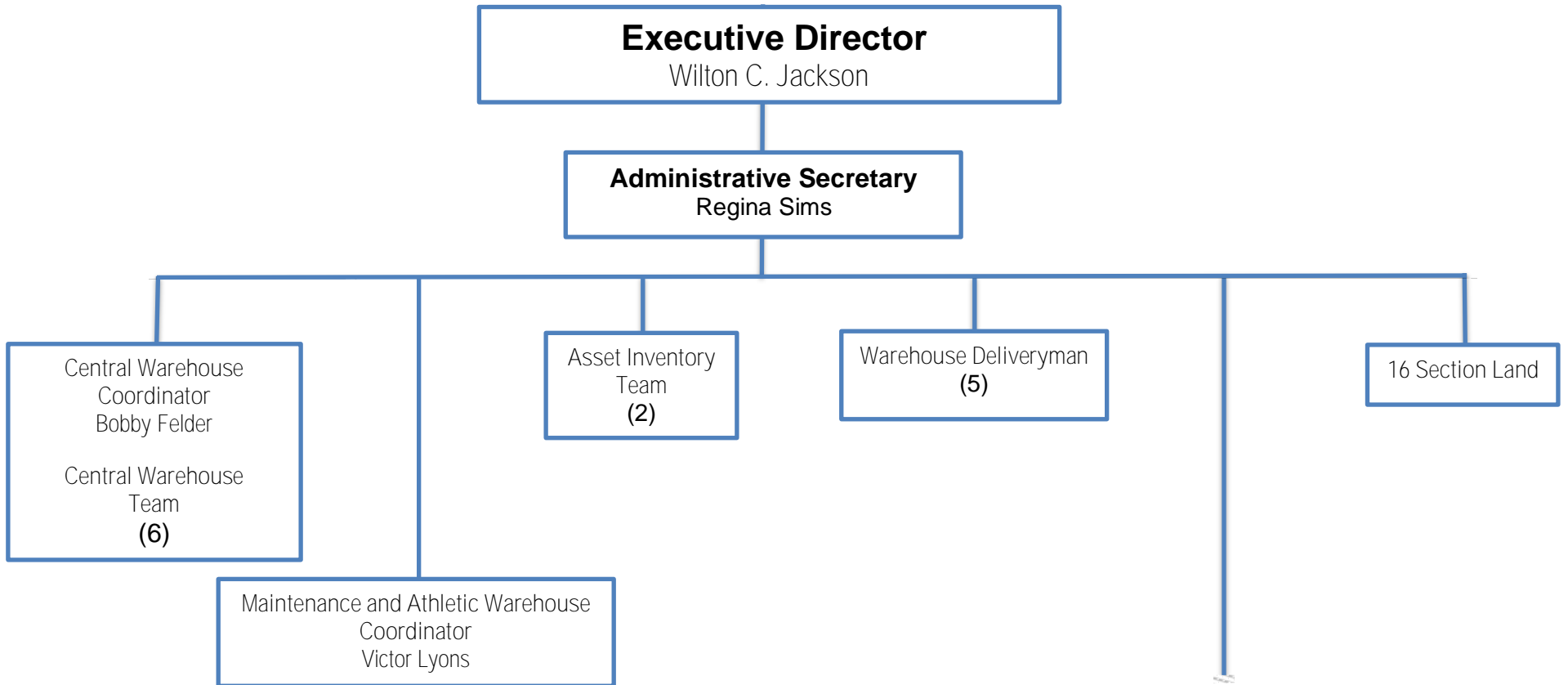
# FACILITIES OPERATIONS



# CHILD NUTRITION D



# ASSETS AND PROPERTY





# BUSINESS SERVICES





# GENERAL COUNSEL

